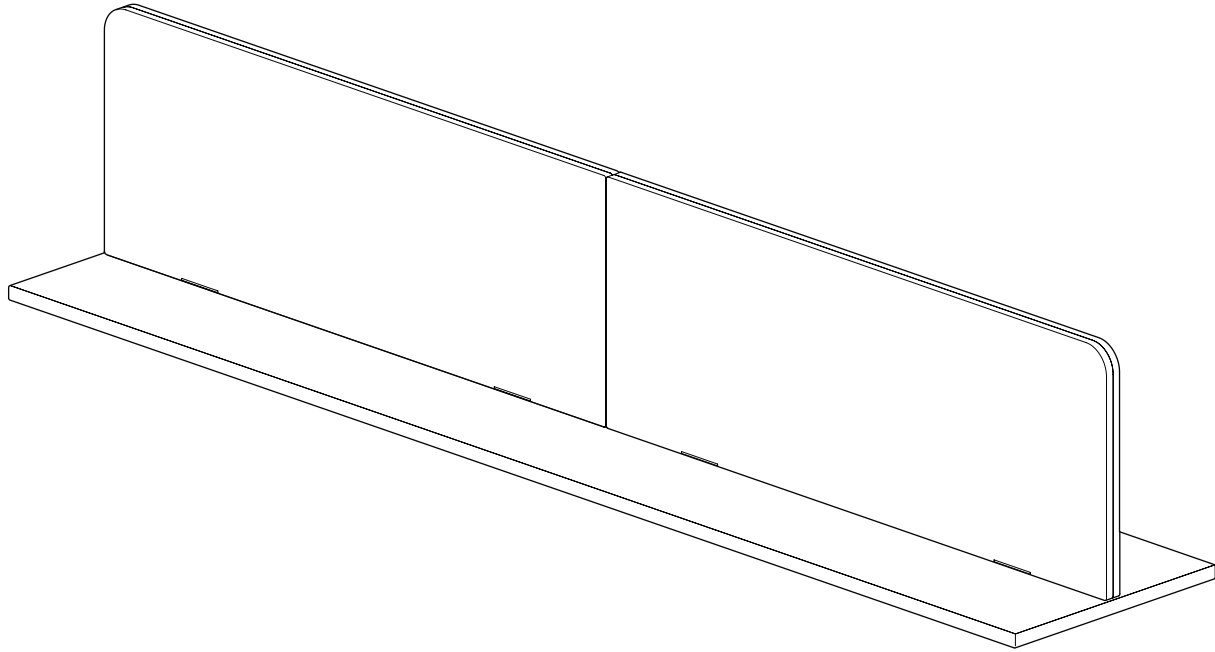


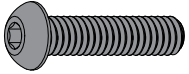
ASSEMBLY

Tonic Dual-Sided Acrylic Infill Screen

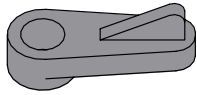


View Digitally

Hardware



5/16-18 X 1.25"
SCREW (125030)

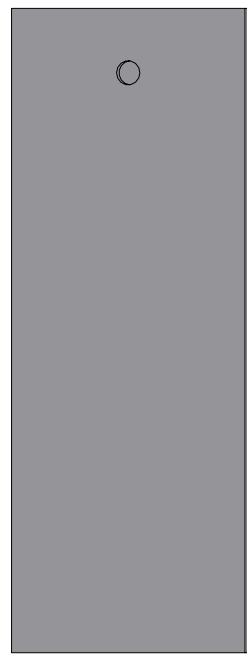


INFILL CLIP
(486915)

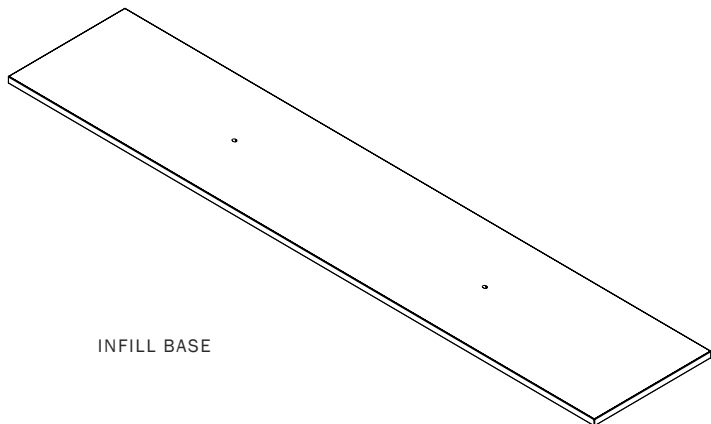


#8 X 3/4" WOOD
SCREW (122810)

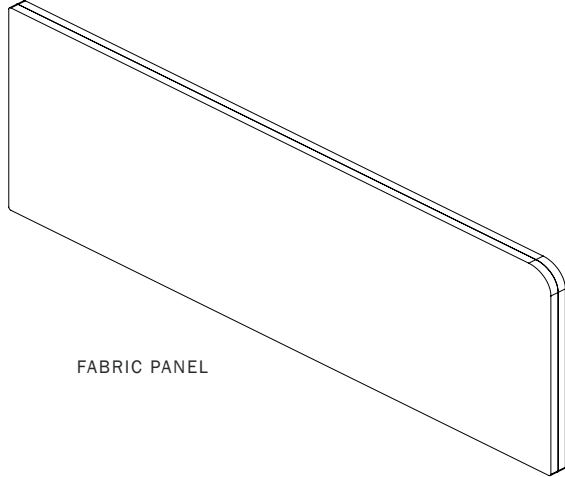
ALIGNMENT PLATE
(504611)



Tonic Worktable Components

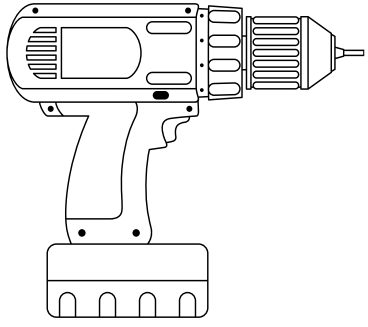


INFILL BASE



FABRIC PANEL

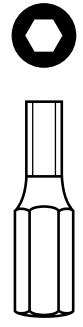
Tools



Electric Drill



P2 Phillips
Driver Bit

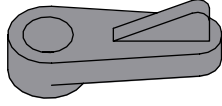


5/16 Hex Drill/
Driver Bit

1. Infill Clips

Turn over the infill (bottom side facing up) and drive supplied infill clips (486915) into all predefined pilot holes with #8 x 3/4" screws (122810) as shown below.

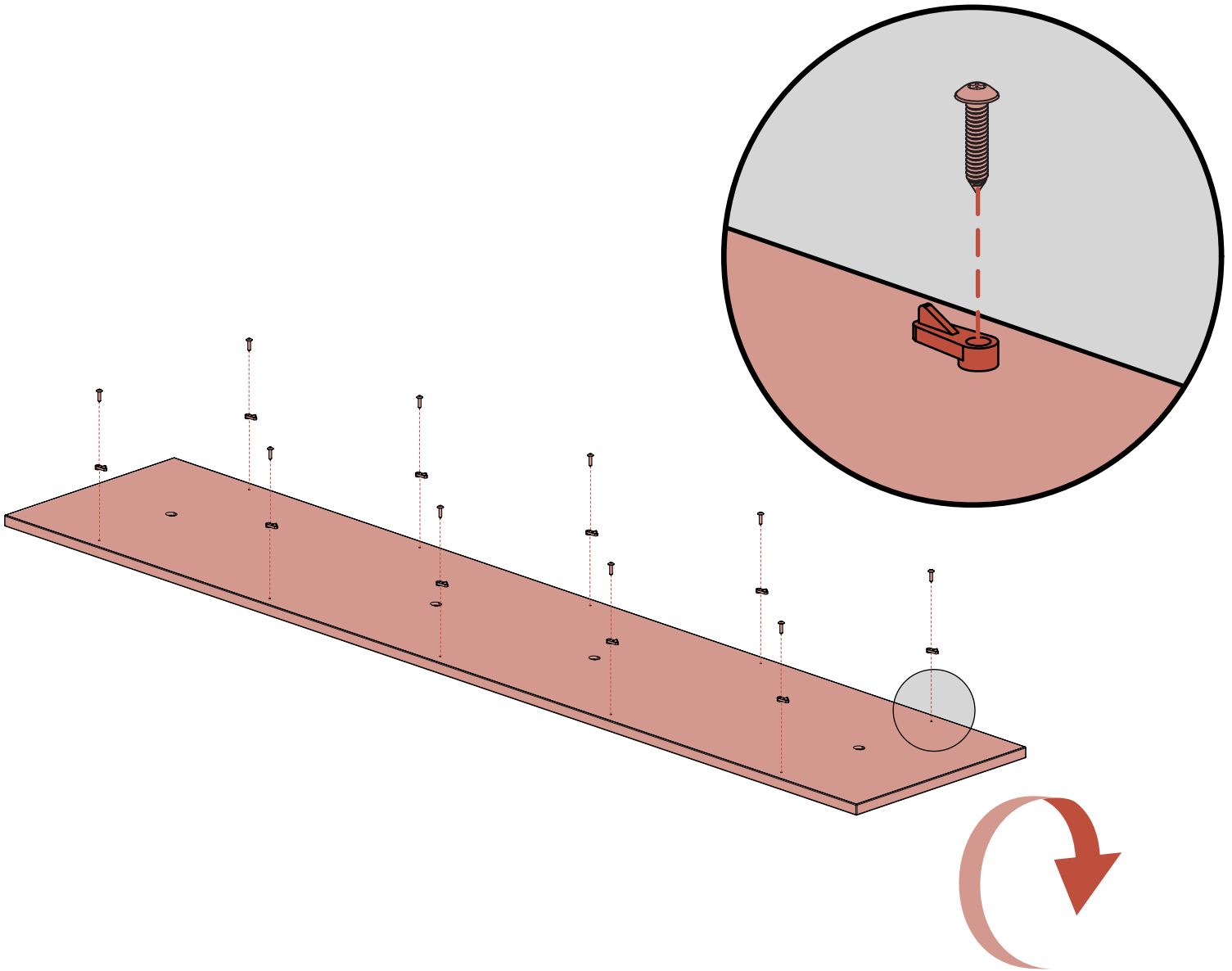
DO NOT USE THE 1" LONG SCREWS THAT ARE USED TO SECURE THE PRIMARY DESKSURFACES



INFILL CLIP
(486915)



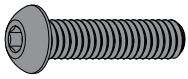
#8 X 3/4" WOOD
SCREW (122810)



2. Attach Screen

Attach fabric panels to infill base with 2 screws (125030) per fabric panel.

For infills with multiple fabric panels, use the alignment plate (504611) between the two screens
- Join screens at the square corner. Push the alignment plate (504611) into the slot in the fabric panels.



5/16-18 X 1.25"
SCREW (125030)



ALIGNMENT PLATE
(504611)

